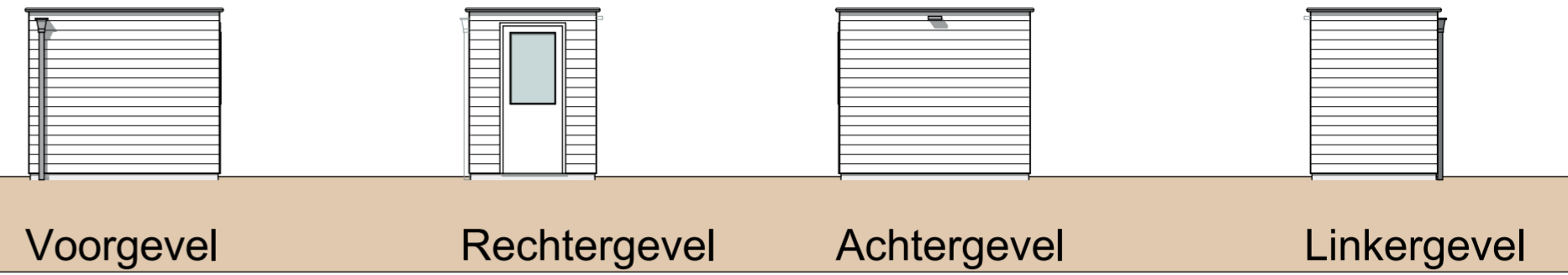
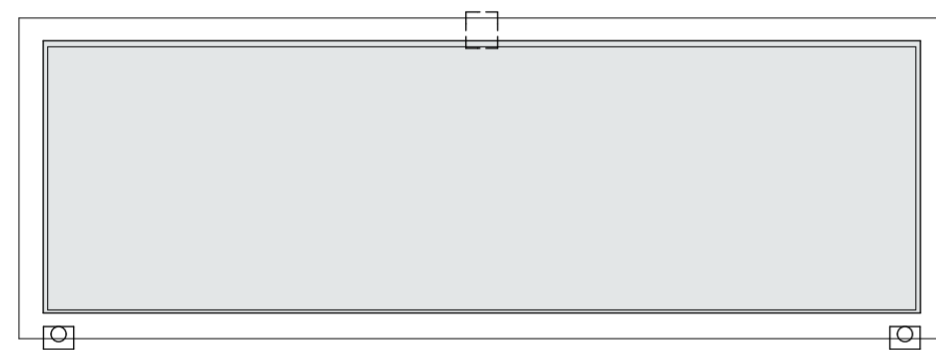


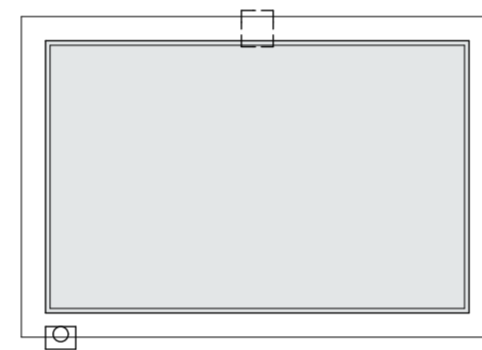
Dubbele berging



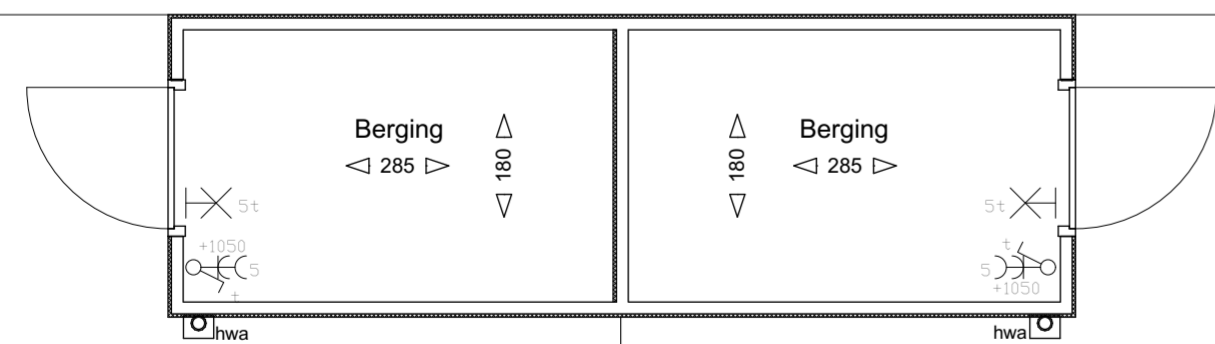
Enkele berging



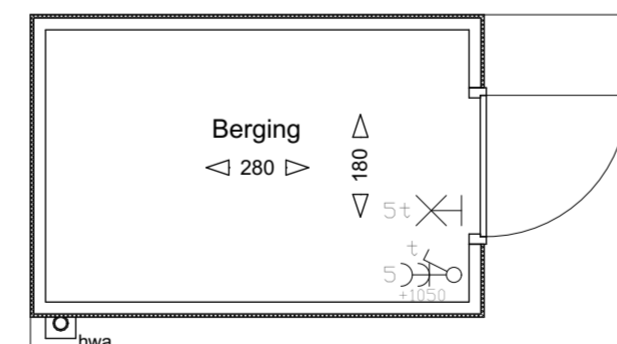
Principe dubbele berging



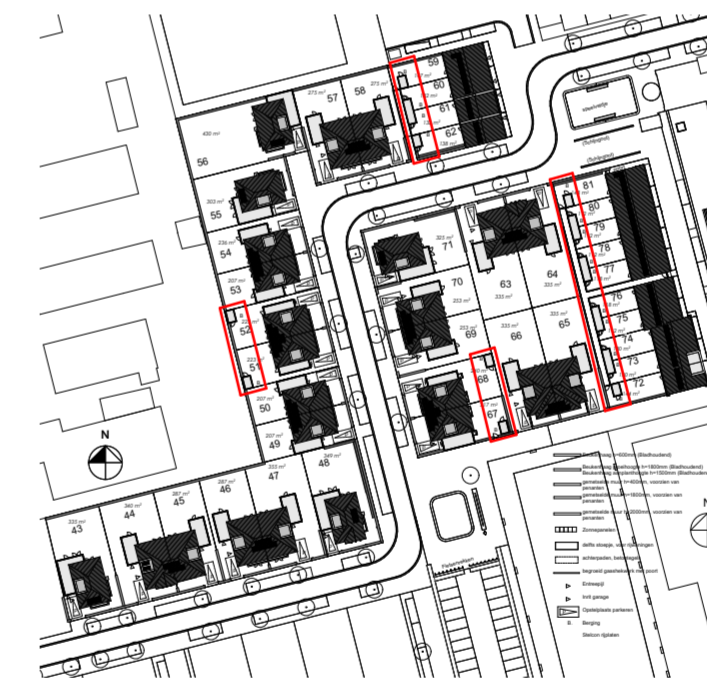
Principe enkele berging



Principe dubbele berging



Principe enkele berging



Ter plaatse van de deur van de bergingen van
 bouwnummer:
 60, 61, 62, 73, 74, 75, 76, 77, 78, 89 en 80

wordt een gevelarmatuur voorzien met
 schemerschakelaar ten behoeve van
 achterpadverlichting.

VFO

VFO Architects | Urban design by

For architectural design
 Interior | product design
 Urbanism and planning
 Architectural advisory

Werknummer: **2015211.1**

Project: **Fase II, KVL te Oosterwijk, BPD**

Tekeningnummer: VT100
 Onderdeel: Principe bergingen

Fase: Verkoop
 Status: DEFINITIEF

Schaal: 1:50, 1:100
 Opmerking: -

Datum: dinsdag 10 mei 2016